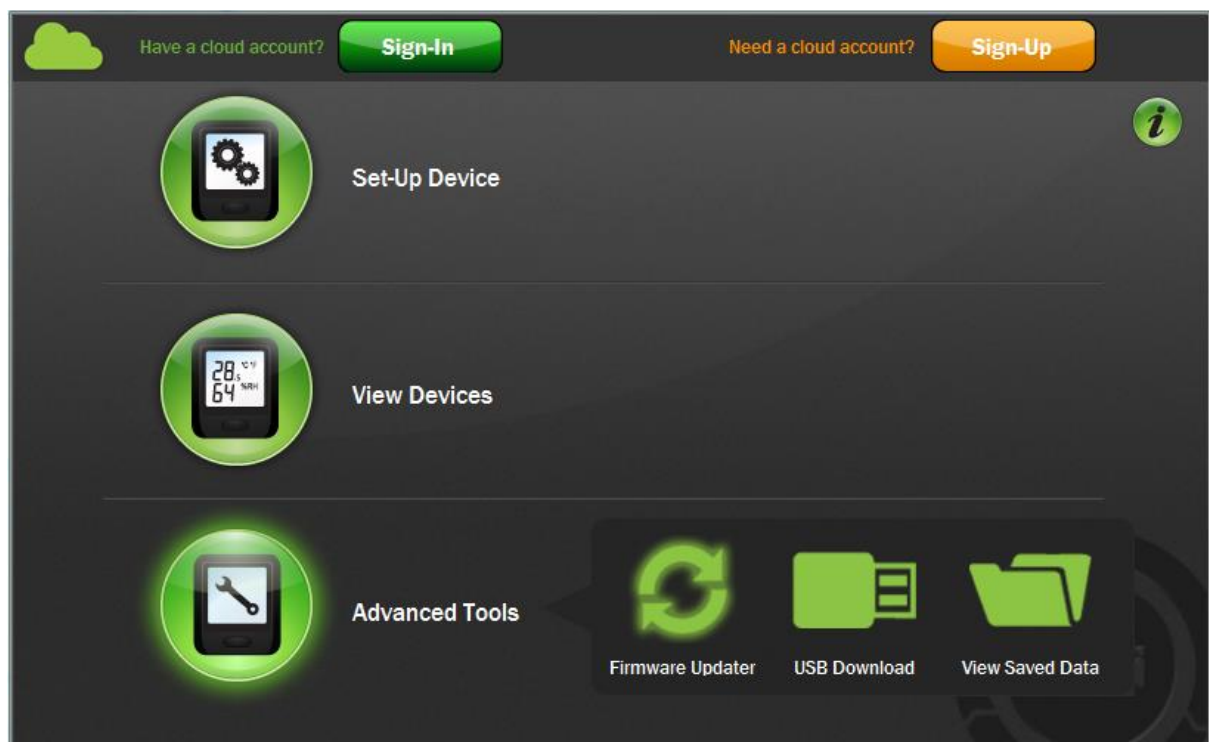


What is this?

- This guide describes the process of updating an FTTA device's firmware.

1. From version 1.30.41 of the FilesThruTheAir™ WiFi Sensor Software onwards, the Firmware Updater is found within the Advanced Tools section.
2. Click on the Firmware Updater icon to launch the software. Follow the on-screen instructions.



3. Connect the WiFi Device you want to update to the PC using the USB cable supplied.



If you are unable to connect do the follow:

- a. Check that the USB cable is connected securely to the WiFi device and the PC.
- b. Try re-connecting the USB cable.

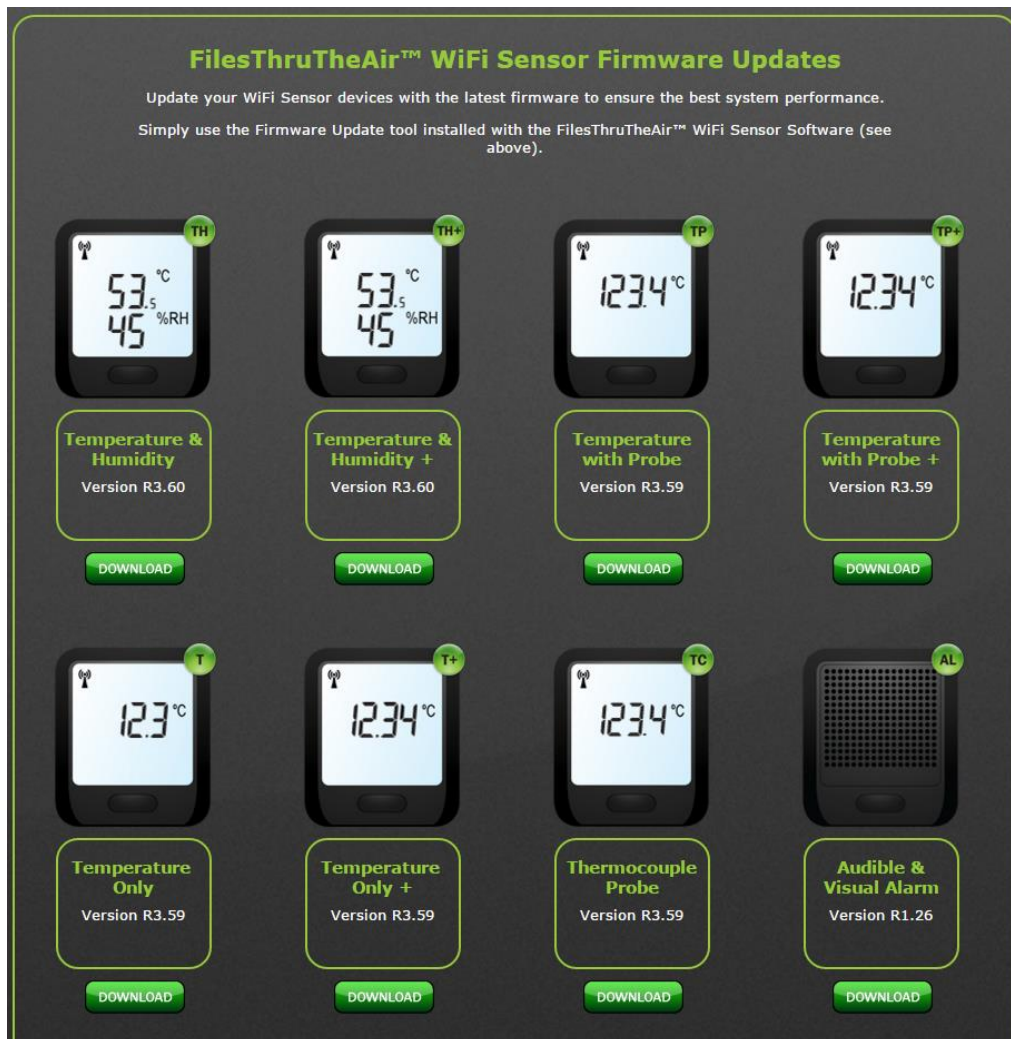


4. Update Firmware – this page shows details of the connected WiFi device, including the MAC address and the current version status of firmware, hardware and system. Follow the steps indicated to update your device with the latest firmware.

A screenshot of a web interface titled "Detected Device Parameters". It features a dark background with white text. On the left, there is a small icon of a device. To the right of the icon, the following parameters are listed: Device Type: WiFi-TH, Mac Address: 98.8B.AD.10.02.62, Firmware Version: R3.59, Hardware Version: #VR:1:HR1.01, and System: 2.3.8 2.3.8 2.0.45 / 1.00. Below the parameters, there are three numbered steps: 1. A warning message about data accumulation and a "Tell me more" link. 2. A link to download the latest firmware update file from http://download.filesthrutheair.com. 3. A "Select the firmware file" section with a text input field and a "BROWSE" button. An information icon (i) is located in the top right corner of the interface.

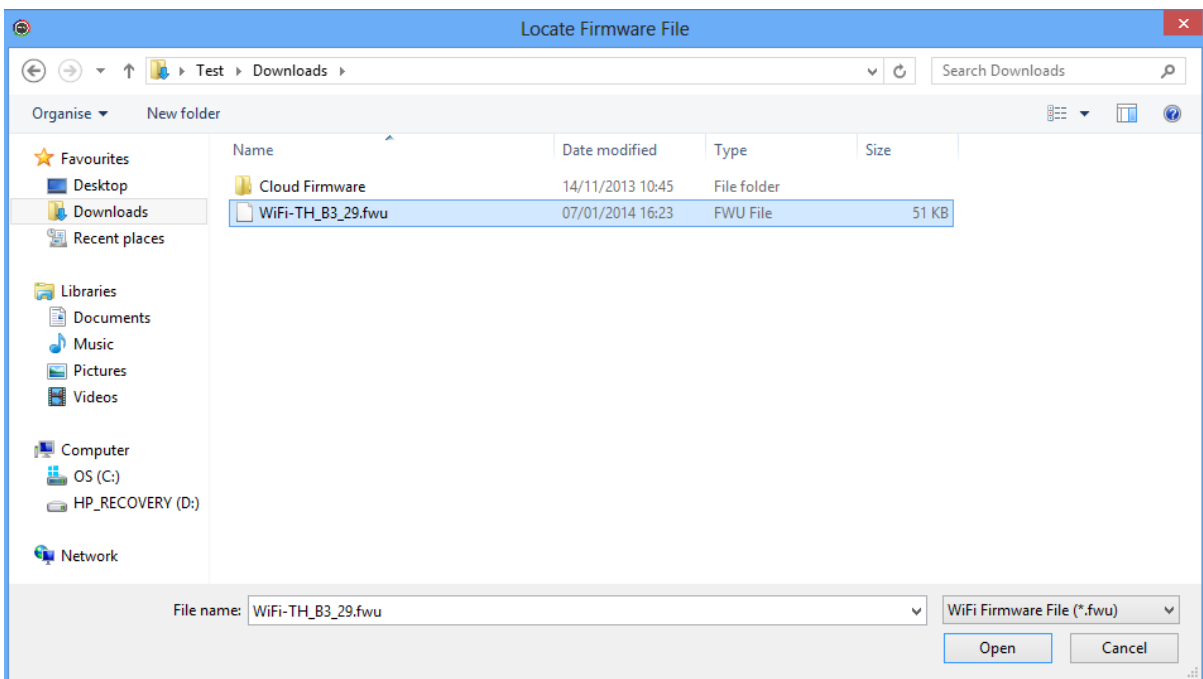
5. Click on the link in step 2 to open the 'Download' web page.
Note: If the web is not accessible from this PC you can download the firmware separately and copy the file over.

6. On the Download webpage, identify the WiFi Device Firmware you require and click download.

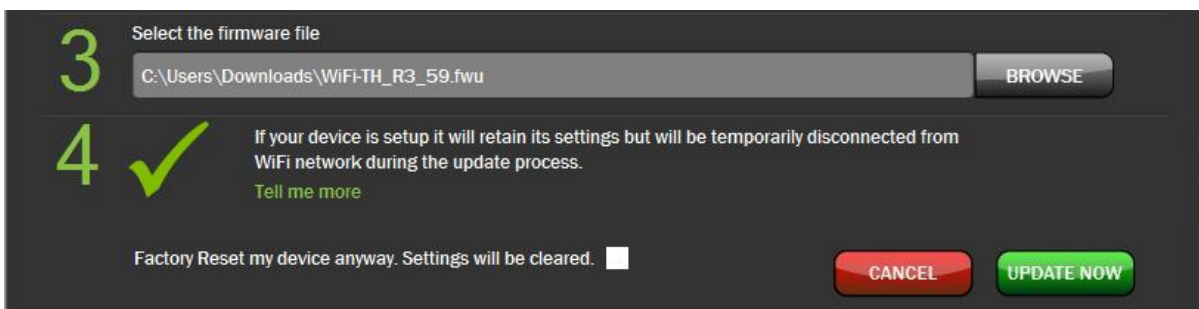


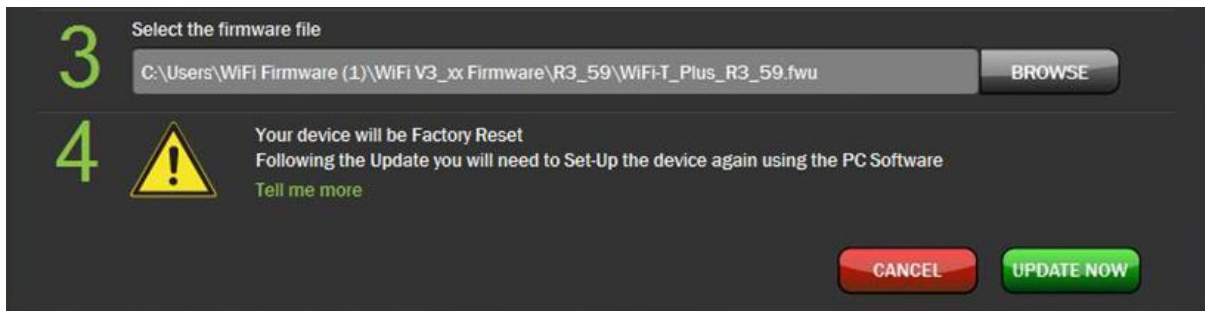
7. Follow the on-screen instructions and save the file to an easily accessible location on your PC.

8. Once the file is saved onto your PC return to the 'WiFi Sensor Firmware Updater' software. Click browse and locate the saved file.



9. If possible, exiting network and configuration settings will be preserved during the update process. If this is not possible, the software will warn you that a Factory Rest will be performed. If you are sure that your do not need to preserve any settings, you can choose to Factory Reset my device anyway, by selecting that option.





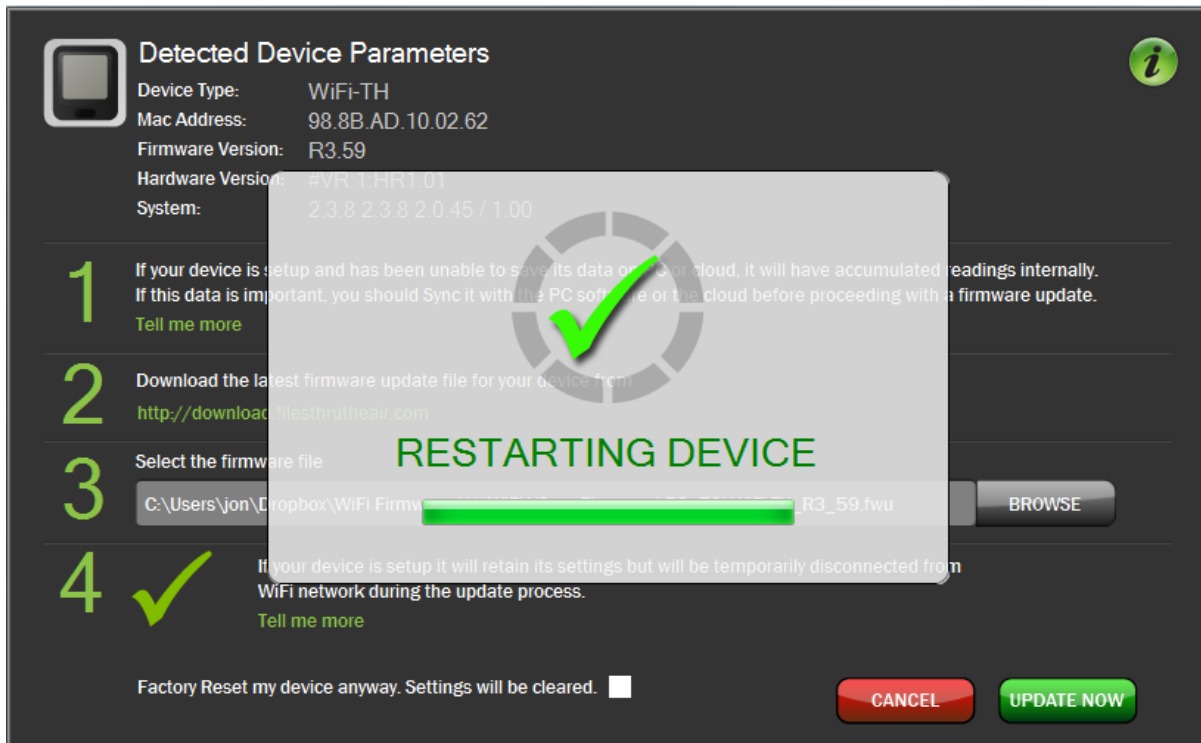
Note: Please be aware that following a Factory Reset any accumulated internal readings that have not been synchronised, will be lost.

10. Click 'Update Now' to start updating your WiFi Device.

Note: The WiFi Device must remain connected during the update process.



11. Once updated the WiFi Device will restart.



12. Your WiFi Device is updated. Click 'OK' to exit the Firmware Updater Software.



13. If you chose to Factory Reset your device or were required to do so during the update process you will now need to set-up your device using the WiFi Sensor Software following the on screen instructions.