

# WIFI-21CFR-DTP+

High Accuracy 21CFR Remote WiFi Temperature Sensor  
Dual Channel External Thermistor



- Can be installed as part of a 21CFR compliant system with additional controls including permission-based use, authority level sign-off and full system audit
- -40°C to +125°C (-40°F to +257°F) temperature measurement range
- Dual channel recording through two external thermistor probes
- Wirelessly stream and view data on the FilesThruTheAir™ 21CFR Cloud
- Easy sensor set-up using free 21CFR WiFi Sensor Software
- Configurable high and low alarms with indicator

The WIFI-21CFR-DTP+ measures the temperature of the environment in which the two probes are situated.

Data is streamed wirelessly over any compatible WiFi network to be viewed on the FilesThruTheAir™ 21CFR Cloud. During configuration, the sensor will search for an existing wireless network whilst physically connected to the PC. It can then be placed anywhere within range of the network. If the sensor temporarily loses connectivity with the network, it will log readings until it is able to communicate again with the FilesThruTheAir™ 21CFR Cloud (max 30 days at 10-second sample interval). The unit is freestanding, but can be attached to a wall or surface using the bracket provided.

The sensor is IEEE 802.11bgn (2.4GHz) compliant, supports WEP, WPA/WPA2 encryption and enterprise networks (PEAP, TTLS, FAST).



## DEVICE SPECIFICATIONS

	Minimum	Typical	Maximum	Unit
<b>Battery life</b>		>6		Months
<b>USB supply voltage</b>	4.5	5	5.5	Vdc
<b>Operating temperature range</b>	-20 (-4)		+60 (+140)	°C (°F)
<b>Logging period (user configurable)</b>	10 sec	10 min	12 hrs	
<b>Transmission period (user configurable)</b>	1 min	1 hr	24 hrs	
<b>Temperature measurement range</b>	-40 (-40)		+125 (+257)	°C (°F)
<b>Temperature measurement resolution</b>		0.01 (0.02)		°C (°F)
<b>Temperature display resolution</b>		0.01		
<b>Temperature accuracy</b>		±0.2/±0.4 (-15 to +80/ +5 to +158)	±0.6/ ±1.2 (-40 to +125/ -40 to +257)	°C/°F
<b>Dimensions</b>	82 x 70 x 36mm (3.22 x 2.75 x 1.41")			

## 21CFR COMPLIANCE

When used with a FilesThruTheAir™ 21CFR Cloud subscription

Permission based use and access	✓
Authority based action sign-off	✓
Data records cannot be edited or deleted	✓
Complete system audit trail	✓
For a detailed compliance checklist, please visit <a href="http://www.filesthrutheair.com/21cfr">www.filesthrutheair.com/21cfr</a>	

## ACCESSORIES

<b>PSU-5VDC-USB-USA</b>	USB Mains Power Adapter for USA
<b>PSU USB-UK</b>	USB Mains Power Adapter for UK
<b>PSU USB-EU</b>	USB Mains Power Adapter for EU
<b>WIFI-ALERT</b>	Audible and Visual Alarm for WiFi Data Logging Sensors
<b>EL-PROBEA-3.0M-TP-GLY</b>	External Thermistor Glycol Probe

## INCLUDED IN THE BOX

<b>EL-WIFI WALL BRACKET</b>	Wall mounting bracket for EL-WiFi sensors
<b>2x EL-PROBEA-3.0M-TP+</b>	3m Thermistor Probes
<b>CABLE USB A-MICRO B</b>	USB Type A to Micro B
<b>CABLE SPLITTER</b>	Dual Probe Y Splitter Cable



## CALIBRATION CERTIFICATES NOW AVAILABLE

FilesThruTheAir™ now offers a Traceable Calibration Certificate Service on Temperature Data Loggers. Using reference equipment which has been calibrated by a UKAS/NIST accredited laboratory and using apparatus traceable to national or international standards. For more information please see [www.filesthrutheair.com](http://www.filesthrutheair.com).



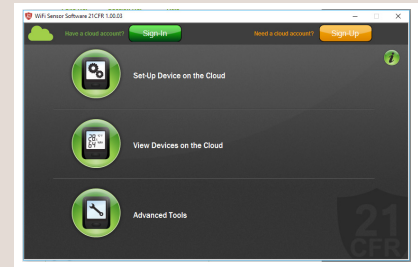
# WiFi-21CFR-DTP+

High Accuracy 21CFR Remote WiFi Temperature Sensor  
Dual Channel External Thermistor



## 21CFR WiFi Sensor Software

FilesThruTheAir's 21CFR WiFi software\* is available as a free download from [www.FilesThruTheAir.com](http://www.FilesThruTheAir.com). Easy to install and use, FilesThruTheAir™ 21CFR WiFi Sensor Software allows easy sensor set-up and connection of sensors to a WiFi network and the FilesThruTheAir™ 21CFR Cloud.



## FilesThruTheAir™ 21CFR Cloud

21CFR Cloud subscription delivers all of the flexibility of a remote monitoring system: Interact with sensors via any internet-enabled device; manage and monitor sensors; access event logs and set up email alerts; assign authorisation levels to user accounts and view comprehensive audit trail records. Unlike the standard FilesThruTheAir Cloud service, 21CFR Cloud includes other controls such as permission-based use, authority sign-off and full system audit to ensure data monitored and collected is regulated to 21CFR Part 11 standard.

**Detailed data reporting**

**Authority sign-off on actions**

**Detailed system audit reporting**

A Cloud account subscription is created during the WiFi sensor set-up process using FilesThruTheAir™ 21CFR WiFi Sensor Software. 21CFR WiFi Sensors are only compatible with the 21CFR Cloud (<https://21cfr.wifisensorcloud.com>)

Download the latest version of the software free of charge from [www.FilesThruTheAir.com](http://www.FilesThruTheAir.com)

## Battery Life and Power Supply

The battery can be recharged (unit must be between 0 - 40 °C) via a PC, a USB +5V wall adapter, or a portable USB battery pack using the USB lead provided. It can also be permanently powered by a USB wall adapter or USB battery pack. Readings may be affected while the internal battery is being charged. However, once charged, continued connection of the charger will have no effect.

Battery life is dependent on: transmission period, WiFi encryption method, WiFi encryption key rotation frequency (determined by the router/access point), signal strength between router/access point and WiFi device, presence volume and type of WiFi traffic from other devices, sample rate and operating temperature.

Specifications liable to change without prior warning

\*Requires Windows 7, 8.1, 10