

GFX-DTC

Dual Channel Thermocouple Logger With Dot Matrix Display



- Rugged and robust construction
- Dual channel, compatible with K, J and T type Thermocouples
- Logging rates between 2 seconds and 1 hour
- Stores over 250,000 readings
- On screen menu and graphing to start, stop, review and restart the logger in the field
- Micro USB interface for PC based set-up and data download
- Immediate, delayed, push-button or temperature triggered start mode
- Graphic LCD shows real-time readings, graph and current status
- Resettable Min/Max readings may be viewed on the LCD
- User set audible alarm
- Highly visible confidence/alarm LEDs
- Supplied with user replaceable ½ AA batteries



The GFX-DTC standalone USB data logger measures and stores up to 252,928 temperature readings from two J, K, or T-type thermocouple inputs at a resolution of 0.1°C. Alternatively, one or both of the channels can be set to record internal temperature.

Using the free PC control software (available as a free download from www.filesthrutheair.com) the user can quickly set up the logger name, sample rate, alarm settings and start mode (immediate start, push to start, delayed start or temperature triggered start). This software can later be used to download the stored data which can be graphed, printed and exported to other applications.

The data logger features a dot-matrix LCD and three face-buttons to navigate through an on-screen menu. This menu provides the user with access to real-time trend analysis, data summaries and the ability to start, stop and restart the data logger without the need to connect the data logger to the host-PC. Users can reset the maximum/minimum reading using the on-screen menu; this introduces an 'event marker' into the data which can later be viewed in the graphing software ('Mark Events' option) and the data file after download.

The data logger is supplied with two replaceable ½AA batteries.

Specifications		Minimum	Typical	Maximum	Unit
Probe measurement range	K-type	-200 (-328)		+1350 (+2462)	°C (°F)
	J-type	-200 (-328)		+1190 (+2174)	°C (°F)
	T-type	-200 (-328)		+390 (+734)	°C (°F)
Internal resolution			0.1 (0.1)*		°C (°F)
Accuracy (overall error)			±0.5 (±0.9)**		°C (°F)
Logging rate		Every 2 seconds		Every 1 hour	Time
Operating temperature range***		-10 (-14)		+40 (+104)	°C (°F)
2 x ½AA 3.6V Lithium Battery Life			4†		Months

* Above 999.9°C/F display becomes 1°C. Internal resolution remains at 0.1°C/F.

** At 25°C. See internal accuracy curve on page 4. Important - quoted accuracy is for the data logger only when measuring within the specified operating temperature. Thermocouple error is not included and should also be taken into consideration.

*** Operating temperature applies to the data logger module only. Please consult the probe manufacturer for operating temperature of thermocouple.

† At 25°C and 10 minute logging rate with no alarm LEDs or sounder and minimal LCD use.

CALIBRATION CERTIFICATES NOW AVAILABLE

FilesThruTheAir™ now offers a Traceable Calibration Certificate Service on Temperature Data Loggers. Using reference equipment which has been calibrated by a UKAS/NIST accredited laboratory and using apparatus traceable to national or international standards. For more information please see www.filesthrutheair.com.

Please note - a calibration certificate can only be provided with a data logger at the time of original purchase

GFX-DTC

Dual Channel Thermocouple Logger
With Dot Matrix Display

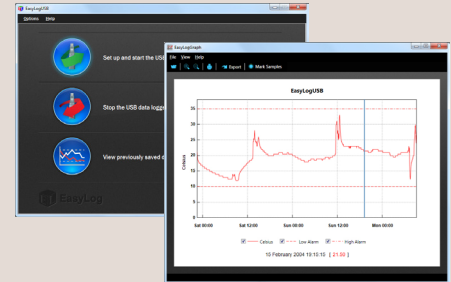


FREE PC CONTROL SOFTWARE POWERED BY EASYLOG

The FilesThruTheAir™ control software is available as a free download from www.filesthrutheair.com. Easy to install and use, the control software is compatible with 32-bit and 64-bit versions of Windows XP, Vista, 7 & 8. The software is used to set up the logger, download, graph and annotate data or export in Excel, PDF and jpeg formats.

The software allows the following parameters to be configured:

- Logger name
- Measurement parameter (°C or °F)
- Logging rate (customisable between 1 second and 12 hours)
- High and low alarms
- Immediate and delayed logging start



Download the latest version of the software free of charge from www.filesthrutheair.com

DIMENSIONS

All dimensions in mm (inches)



www.filesthrutheair.com +44 (0)1425 651111 sales@filesthrutheair.com

GFX-DTC

Dual Channel Thermocouple Logger
With Dot Matrix Display



MENU BUTTON FUNCTIONS AND LED SCREEN INDICATION

<p>ARMED! Press button to start logging</p>	<p>DELAYED START Starts logging at 10:30:00 04/03/12</p>	<p>DELAYED START Starts logging when temperature above 36.2°C</p>	<p>START LOGGER</p> <ul style="list-style-type: none">Loggers can be started immediately on a button press, delayed to a specific time or delayed to specific temperature reading	<p>DISPLAY DATA</p> <ul style="list-style-type: none">Data can be displayed on screen in tabular or graphical formatYou can switch between these views by pressing the gfx / txt buttons at the bottom-left of your screen
<p>When this cube is spinning in the top-left corner your logger is logging</p>	<p>High/Low Alarm indicators are displayed at the top of your screen</p>	<p>This icon indicates that your battery is low and will need to be replaced soon</p>	<p>ON-SCREEN ICONS</p>	<p>STOP/START LOGGING & MUTE ALARM</p> <ul style="list-style-type: none">By pressing the stop button, you can stop your logger, or view logger settings. If you have already stopped logging, this option will change to 'Start Logging'. The audible alarm can be muted from this menu if enabled
<p>Temperature Max 34.8°C Min 22.8°C Since 10:30 24/09/2012</p> <p>Mem Used 32% Readings 6336</p>	<p>Locked Mode</p>	<p>SUMMARY DATA</p> <ul style="list-style-type: none">Summary screen displays max/min log and last log. Reset function clears summary if requiredThese screens can be reached by pressing the i button	<p>SUMMARY DATA</p>	<p>LOCKED MODE</p> <ul style="list-style-type: none">When in locked mode - an option during PC set-up - the logger can only be stopped and re-started using a PC loaded with the unit's configuration software
<p>LOGGER SETTINGS</p> <ul style="list-style-type: none">To view a summary of the logger's settings press the stop button, then click 'Logger Settings'	<p>Time & date not set Start unit logging using PC</p>	<p>Memory is 90% full Download data to a PC to clear</p>	<p>Memory full, logger stopped Download data to a PC to clear</p>	<p>POP-UP MESSAGES</p> <ul style="list-style-type: none">A message will overlay the screen - if there is an issue - the next time a button is pressed, e.g. if the logger is running low on memory

Please note that screens may vary slightly depending on model. GFX-T screens shown.

BATTERY INFORMATION

We recommend that you replace the batteries every 4 months, or prior to logging critical data.

Replacement

The GFX-DTC does not lose its stored readings when the batteries are discharged or when the batteries are replaced; however, the data logging process will be stopped. If the batteries are changed within a 2 minute window the GFX-DTC will retain its settings (internal clock and logging mode). This will allow logging to be restarted without additional connection to a PC via USB.

Only use 2 x 3.6V ½AA lithium batteries. Do not mix battery types and do not mix new and old batteries. Before replacing the batteries, unplug the GFX-DTC from the PC.

WARNING

Handle lithium batteries carefully, observe warnings on battery casing. Dispose of in accordance with local regulations.

Passivation

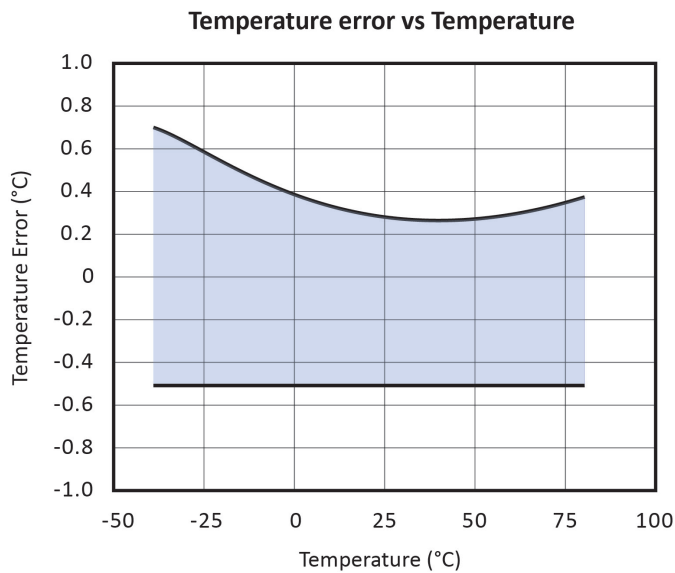
If left unused for extended periods of time, the Lithium batteries used in the FilesThruTheAir™ range of data loggers naturally form a non-conductive internal layer, preventing them from self-discharge and effectively increasing their shelf life. When first installed in the data logger, this may cause a momentary drop in the battery voltage (the Transient Minimum Voltage) as the internal layer is broken down, resulting in the data logger resetting. Inserting the batteries in the data logger and leaving it connected to a PC for about 30 seconds will remove this layer. After this, remove and re-install the batteries to reset the data logger. Overall battery life will not be affected.

GFX-DTC

Dual Channel Thermocouple Logger
With Dot Matrix Display



INTERNAL TEMPERATURE ACCURACY (Cold-junction Compensation)



CAUTION

The K-Type thermocouple probes supplied with the GFX-DTC are not electrically isolated from the thermocouple junction, to give a faster response.

However depending upon application it may be necessary to use electrically isolated thermocouple probes to avoid ground loops, and/or situations where the probes may come into contact with conductors that are at different electrical potentials.

Where doubt exists Lascar recommends that electrically isolated probes are always used.