

GFX-DTP

Dual Channel Thermistor Logger With Dot Matrix Display



- Rugged and robust construction
- Dual channel -40 to +125°C (-40 to +257°F) probe measurement range
- Logging rates between 2 seconds and 1 hour
- Stores over 250,000 readings per channel
- On screen menu to start, stop, review and restart the logger in the field
- Micro USB interface for PC based set-up and data download
- 3.5mm jack socket for connection of supplied thermistor probes
- Supplied with 2 x 1.0m type 2 sensor probes
- Immediate, delayed, push-button or temperature triggered start mode
- Graphic LCD shows real-time readings, data summary, graph and current status
- User set audible alarm
- Highly visible confidence/alarm LEDs
- Supplied with user replaceable ½ AA batteries



This standalone USB data logger measures and stores over 250,000 temperature readings from two thermistor probes over a -40 to +125°C (-40 to +257°C) range at a resolution of 0.1°C.

Using the free PC control software (available as a free download from www.filesthrutheair.com) the user can quickly set up the logger name, sample rate, alarm settings and start mode (immediate start, push to start, delayed start or temperature triggered start). This software can later be used to download the stored data which can be graphed, printed and exported to other applications.

The data logger features a dot-matrix LCD and three face-buttons to navigate through an on-screen menu. This menu provides the user with access to real-time trend analysis, data summaries and the ability to start, stop and restart the data logger without the need to connect the data logger to the host-PC. Users can reset the maximum/minimum reading using the on-screen menu; this introduces an 'event marker' into the data which can later be viewed in the graphing software ('Mark Events' option) and the data file after download.

The data logger is supplied with two replaceable ½AA batteries.

Specifications	Minimum	Typical	Maximum	Unit
Supplied probe measurement range	-40 (-40)		+125 (+257)	°C (°F)
Internal resolution		0.1 (0.2)		°C (°F)
Accuracy (logger error)		±0.1 (±0.2)*		°C (°F)
Logging rate	Every 2 seconds		Every 1 hour	Time
Operating temperature range	-10 (-14)		+40 (+104)	°C (°F)
2 x ½AA 3.6V Lithium Battery Life		4**		Months

* At 25°C. See probe accuracy curve on page 4. Important - quoted accuracy is for the data logger only when measuring within the specified operating temperature. Thermistor error is not included and should also be taken into consideration.

** At 25°C and 10 minute logging rate with no alarm LEDs or sounder and minimal LCD use.

CALIBRATION CERTIFICATES NOW AVAILABLE

FilesThruTheAir™ now offers a Traceable Calibration Certificate Service on Temperature Data Loggers. Using reference equipment which has been calibrated by a UKAS/NIST accredited laboratory and using apparatus traceable to national or international standards. For more information please see www.filesthrutheair.com.

Please note - a calibration certificate can only be provided with a data logger at the time of original purchase

GFX-DTP

Dual Channel Thermistor Logger With
Dot Matrix Display

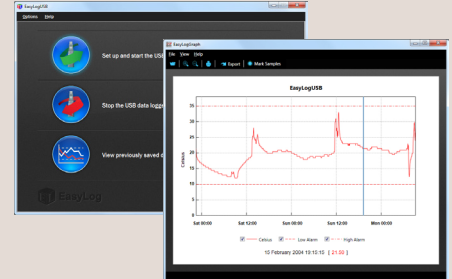


FREE PC CONTROL SOFTWARE POWERED BY EASYLOG

The FilesThruTheAir™ control software is available as a free download from www.filesthrutheair.com. Easy to install and use, the control software is compatible with 32-bit and 64-bit versions of Windows XP, Vista, 7 & 8. The software is used to set up the logger, download, graph and annotate data or export in Excel, PDF and jpeg formats.

The software allows the following parameters to be configured:

- Logger name
- Measurement parameter (°C or °F)
- Logging rate (customisable between 1 second and 12 hours)
- High and low alarms
- Immediate and delayed logging start



Download the latest version of the software free of charge from www.filesthrutheair.com

DIMENSIONS

All dimensions in mm (inches)



www.filesthrutheair.com +44 (0)1425 651111 sales@filesthrutheair.com

GFX-DTP

Dual Channel Thermistor Logger With Dot Matrix Display



MENU BUTTON FUNCTIONS AND LED SCREEN INDICATION

			START LOGGER <ul style="list-style-type: none">Loggers can be started immediately on a button press, delayed to a specific time or delayed to specific temperature reading		DISPLAY DATA <ul style="list-style-type: none">Data can be displayed on screen in tabular or graphical formatYou can switch between these views by pressing the gfx / txt buttons at the bottom-left of your screen	
			ON-SCREEN ICONS <ul style="list-style-type: none">When this cube is spinning in the top-left corner your logger is loggingHigh/Low Alarm indicators are displayed at the top of your screenThis icon indicates that your battery is low and will need to be replaced soon		STOP/START LOGGING & MUTE ALARM <ul style="list-style-type: none">By pressing the stop button, you can stop your logger, or view logger settings. If you have already stopped logging, this option will change to 'Start Logging'. The audible alarm can be muted from this menu if enabled	
			SUMMARY DATA <ul style="list-style-type: none">Summary screen displays max/min log and last log. Reset function clears summary if requiredThese screens can be reached by pressing the i button		LOCKED MODE <ul style="list-style-type: none">When in locked mode - an option during PC set-up - the logger can only be stopped and re-started using a PC loaded with the unit's configuration software	
					LOGGER SETTINGS <ul style="list-style-type: none">To view a summary of the logger's settings press the stop button, then click 'Logger Settings'	POP-UP MESSAGES <ul style="list-style-type: none">A message will overlay the screen - if there is an issue - the next time a button is pressed, e.g. if the logger is running low on memory

Please note that screens may vary slightly depending on model. GFX-T screens shown.

BATTERY INFORMATION

We recommend that you replace the batteries every 4 months, or prior to logging critical data.

Replacement

The GFX-DTP does not lose its stored readings when the batteries are discharged or when the batteries are replaced; however, the data logging process will be stopped. If the batteries are changed within a 2 minute window the GFX-DTP will retain its settings (internal clock and logging mode). This will allow logging to be restarted without additional connection to a PC via USB.

Only use 2 x 3.6V 1/2AA lithium batteries. Do not mix battery types and do not mix new and old batteries. Before replacing the batteries, unplug the GFX-DTP from the PC.

WARNING

Handle lithium batteries carefully, observe warnings on battery casing. Dispose of in accordance with local regulations.

Passivation

If left unused for extended periods of time, the Lithium batteries used in the FilesThruTheAir™ range of data loggers naturally form a non-conductive internal layer, preventing them from self-discharge and effectively increasing their shelf life. When first installed in the data logger, this may cause a momentary drop in the battery voltage (the Transient Minimum Voltage) as the internal layer is broken down, resulting in the data logger resetting. Inserting the batteries in the data logger and leaving it connected to a PC for about 30 seconds will remove this layer. After this, remove and re-install the batteries to reset the data logger. Overall battery life will not be affected.

GFX-DTP

Dual Channel Thermistor Logger With Dot Matrix Display



THERMISTOR PROBE

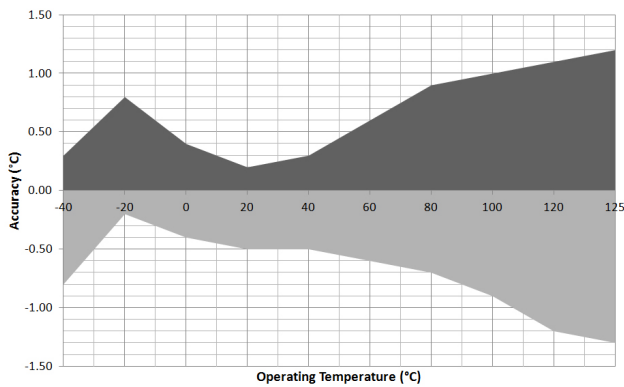
The probes supplied with the GFX-DTP uses a precision thermistor to sense the temperature. Alternative lengths and probe options are available.

Alternatively, the probe length may be extended by the use of a suitable extension cable. We recommend twisted pair with high quality 3.5mm jack socket/plugs for best results.

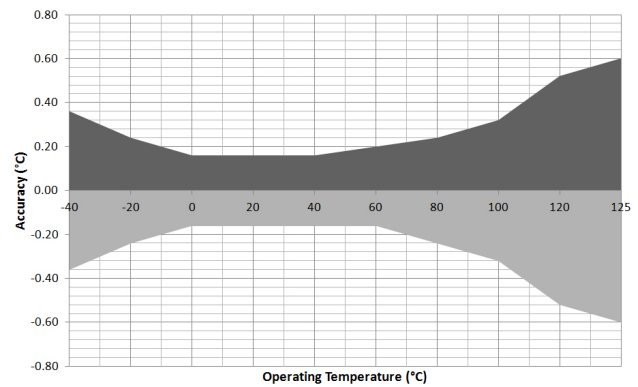
Note: The thermistor is externally isolated from the probe tip.

The available options are listed online at www.filesthrutheair.com

PROBE MEASUREMENT ACCURACY



Supplied 'Type 2' Thermistor Probe
Part number: PROBE2-1.0M-TP



'Type A' Thermistor Probe - sold separately.