

EL-DataPad

Quick Start Guide



Welcome

Thank you for purchasing an EL-DataPad portable viewer for use with EasyLog USB data loggers. This quick start guide provides basic information to help you set up your new product for the first time and begin using the EL-DataPad with your chosen data logger.

Using Your EL-DataPad for the First Time

1. Fully Charge Your EL-DataPad


Your EL-DataPad comes with approximately 25% battery capacity so you have the opportunity to try the unit straight out of the box. HOWEVER, before extended use, fully charge the unit by connecting it to your PC using the cable provided.

Your EL-DataPad will display a  when it is fully charged.

2. Turn On The EL-DataPad

To turn on, simply press the button on the front. To turn off, press and hold the button for 3 seconds. To conserve battery life, the screen will turn off after a period of inactivity. Press the button or touch the screen to wake the unit.

3. Set Time, Date and Backlight Requirement

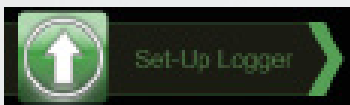
When the unit is fully charged, detach from your PC. Press the  icon to choose screen options such as screen time out and to set time and date.

Connecting an EL-USB Data Logger

Insert your EL-USB Data Logger into the USB port on the top of the EL-DataPad. Once connected, you can download existing data from that unit, or set-up your logger for use.

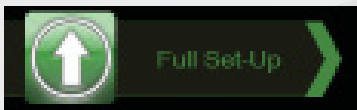


Set-Up Logger



Note: If you are setting up a data logger that is already logging data follow 'Stop Logger & Download' instructions first.

By pressing on the Set-Up Logger icon shown above, users can name their data logger, select a sample rate, set high and low alarms and choose the logging start time. Simply press the green icon and follow the on-screen instructions.

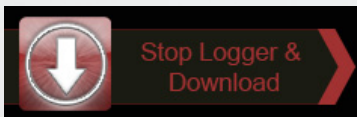


Full Set-Up guides you through every stage of the logger set-up using on-screen instructions.



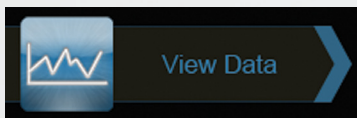
If you have previously set-up the logger and just want to change the start time and date, use the Quick Set-Up.

Stop Logger & Download




Connect the data logger to the EL-DataPad, press the red arrow and follow the on-screen instructions.

View Data



The EL-DataPad enables you to view graphical data that is stored in memory. To view data, press the blue graph icon and select the file you wish to view by following the on-screen instructions.

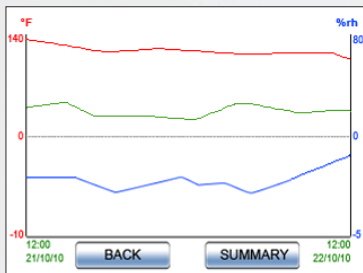
Press the help icon  for additional information.



www.lascarelectronics.com

Graphical data is displayed in the following formats:

Trend



This graph is based on data from an EL-USB-2 logger.

Legend & Summary

KEY

TEMPERATURE — HUMIDITY — DEW POINT —

SUMMARY

TEMP HIGH ALARM: 6
TEMP LOW ALARM: 4

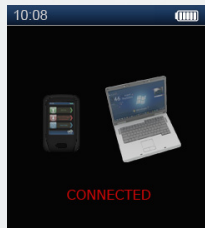
HUMIDITY HIGH ALARM: 0
HUMIDITY LOW ALARM: 1

TEMP MAX/MIN: -20 / 20
HUMIDITY MAX/MIN: -20% / 20%

BACK

Transferring data onto a PC

Connect the EL-DataPad to the PC with the cable provided. The PC will detect that the EL-DataPad has been connected.



Files downloaded will be located in the EL-DataPad drive in the 'Log Files' Directory. Select the files you wish to download and copy them to your PC. Use EasyLog software on your PC to view data in detail and to display graphs or export them to spreadsheet packages such as Microsoft® Excel for further analysis.

Recharging

The cable provided with the EL-DataPad is used for data transfer and recharging. The EL-DataPad will automatically start recharging once it is connected to a PC. To use less power decrease the backlight time setting.



Copyright Lascar Electronics Ltd. 2011 Issue 2 10/11

www.lascarelectronics.com

UK Module House
Whiteparish, Salisbury
Wiltshire, SP5 2SJ
UNITED KINGDOM
T +44 (0) 1794 884567
E sales@lascar.co.uk

USA 4258 West 12th Street
Erie, PA 16505
UNITED STATES
T +1 (814) 835-0621
E us-sales@lascarelectronics.com

HK 8th Floor, China Aerospace
Centre
143 Hoi Bun Road
Kwun Tong, Kowloon
HONG KONG
T +852 2389 6502
E saleshk@lascar.com.hk