

# USB-TH-21CFR-LCD

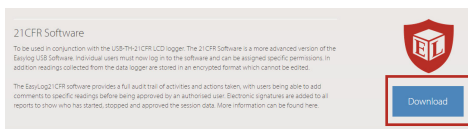
## Quick Start Guide



### DOWNLOAD & INSTALL EasyLog 21CFR SOFTWARE

Windows™ XP, 7 & 8 (32 & 64bit)

Visit [www.filesthrutheair.com/support](http://www.filesthrutheair.com/support) and click on the download link.



Double click on the downloaded **FilesThruTheAir™ 21CFR Installer.exe** file, and follow the on screen prompts.

To see how FilesThruTheAir™ 21CFR Software meets the regulations, view the checklist at [www.filesthrutheair.com](http://www.filesthrutheair.com)

### FIRST TIME SETUP

- Double click on the FilesThruTheAir™ 21CFR icon on your desktop.

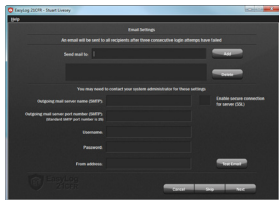


#### 1 Administrator Setup



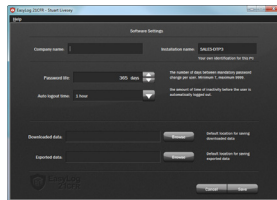
- You will need to create an Administrator for the software by filling in the required information in the setup wizard. Make sure you keep a note of your login details!

#### 2 Email Settings



- You may need to ask your IT support or email service provider for the required details. More information can be found in the software's helpfile. If you aren't sure of the details, you can skip this step and come back to it later.

#### 3 Software Settings

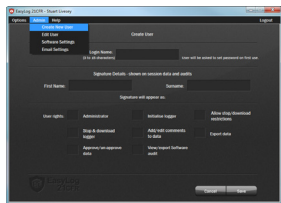


- These are global settings that apply to all users of the software, some of which are required as part of the 21CFR standard.

For a full product data sheet for your data logger, or for more information on the rest of the FilesThruTheAir™ range visit

[www.filesthrutheair.com](http://www.filesthrutheair.com)

## 4 Create Additional Users



- Additional users can then be set up from the Admin menu if required. New users will be asked to create a password when they first log in

**You are now ready to start data logging  
with FilesThruTheAir™ 21CFR**

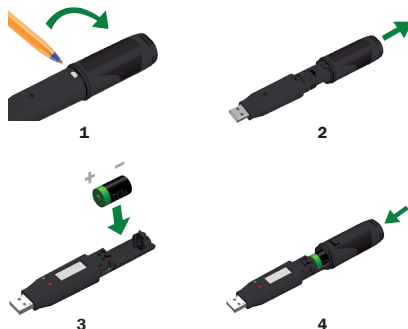
For more information on how to use FilesThruTheAir™ 21CFR, please see the help file in the software.

This can be found by clicking 'Help' > 'Help Topics'.

## REPLACING YOUR DATA LOGGER'S BATTERY

Your data logger is provided with a 3.6V 1/2AA battery already installed. You can change the battery by following the instructions below.

Replacement batteries are available from [www.filesthrutheair.com](http://www.filesthrutheair.com).



## STARTING YOUR DATA LOGGER



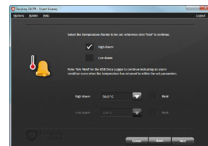
Click on the 'Set up and start the USB data logger' button



Name your logger and select the logging rate



Select how the LCD should function, and what happens when your logger is full



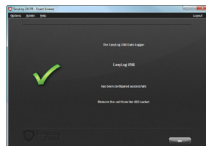
Set high and low alarms if required



Set restrictions for stopping the logging session



Select when you would like the logging session to start



Your logger is now ready for use!  
Remove from the USB port

If you would like advice on how best to use the data logger for a particular application, please contact your nearest FilesThruTheAir™ representative.

Issue 1

## IMPORTANT SAFETY INFORMATION



### Repairing or Modifying

Never attempt to repair or modify FilesThruTheAir™ products. Dismantling them, other than for the purpose of changing replaceable batteries, may cause damage that is not covered under the warranty. Servicing should only be provided by an authorized supplier.



### Disposal and Recycling Information

You must dispose of FilesThruTheAir™ products in accordance with relevant laws and regulations. They contain electronic components and lithium batteries and therefore must be disposed of separately from household waste.

## NEED HELP WITH YOUR DATA LOGGER?

[www.filesthrutheair.com](http://www.filesthrutheair.com) +44 (0)1425 651111 [sales@filesthrutheair.com](mailto:sales@filesthrutheair.com)

FilesThruTheAir™ is a trademark of Corintech Ltd.