



What is this?

This help document offers guidance on using the USB Download tool with the FilesThruTheAir™ WiFi Sensor Software.

Title Heading 1

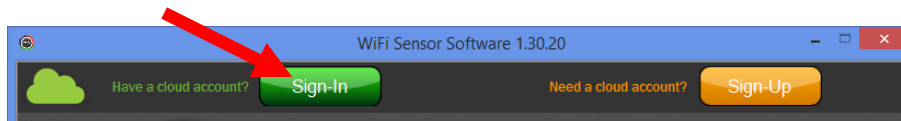
What is the purpose of the USB Download Function?

Under normal operation the FilesThruTheAir™ WiFi sensors will regularly transmit their readings to either a PC or the FilesThruTheAir™ Cloud. However under some circumstances where this is no longer possible, the PC Software is able to retrieve any unsent readings via the USB port. The retrieved readings can be stored either locally on the PC or if the sensor was setup for the Cloud the readings can be synchronised to the Cloud just as if the sensor had continued to transmit.

How to perform the USB Download

To perform the download you will need to connect the sensor to the PC using the micro USB cable supplied. Once connected run the WiFi Sensor Software as per normal.

If the sensor was setup on the Cloud and you want the unsent readings uploaded to the Cloud then sign in first using the button at the top.



Note: You will not be able to synchronise readings to the Cloud if the sensor you are connected to is not presently set up on the account you sign in to.



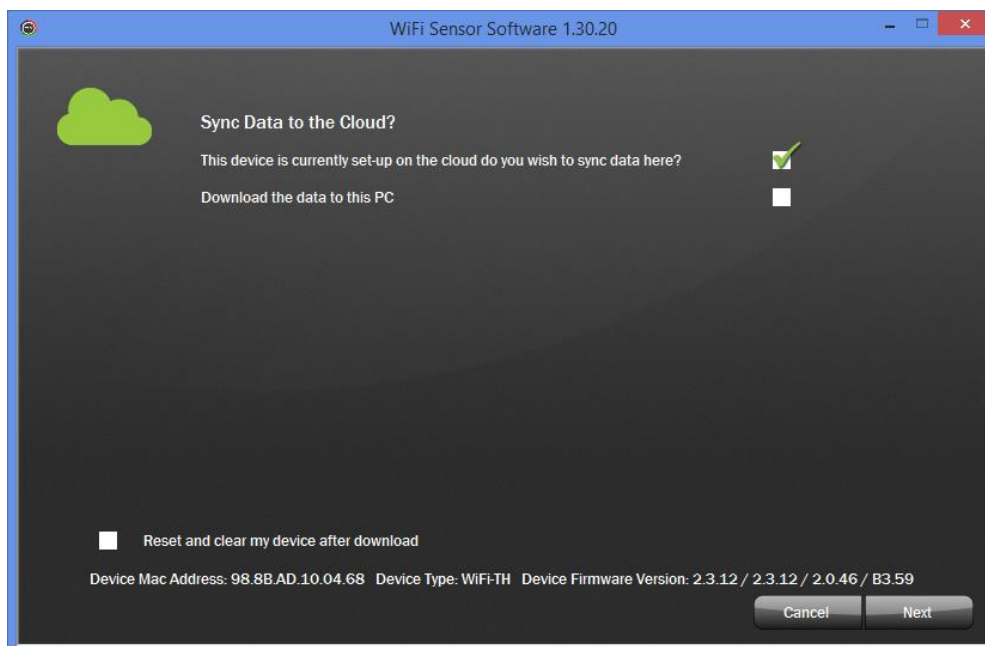
Click on Advanced Tools and select USB Download.



The software will now connect with the sensor via USB. Once connection has been established you will be offered various settings for the download.

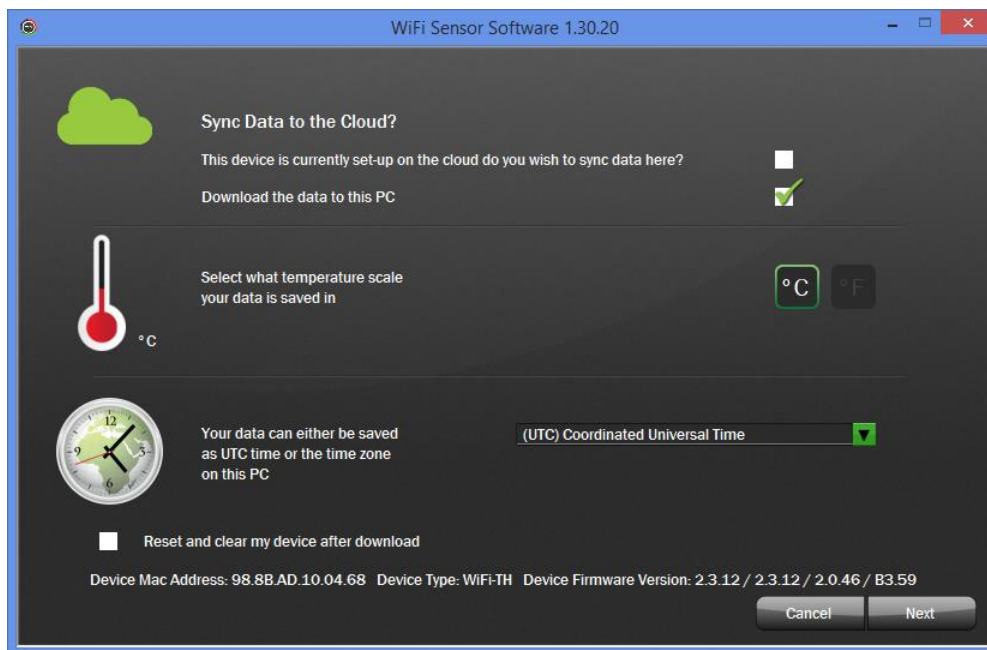
Depending if you signed into the Cloud and the sensor was detected within your account you will be offered the choice to synchronise to the Cloud or Download to the PC. Select the appropriate destination. If your destination is not available the software will notify you.

If you choose to upload to the Cloud then any further settings required will be taken from your Cloud account settings.





If you choose to download to the PC then you will need to select some appropriate settings



Why am I being asked about temperature scale and time zone?

All WiFi sensors store their internal readings in degrees Celsius (°C). The USB Download utility can convert the readings to degrees Fahrenheit (°F) if required.

All readings within the sensor are logged against UTC (GMT+0). You can select to have the readings logged against UTC or the local time zone as set up on your PC.