

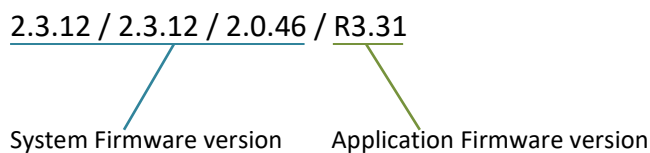


What is this?

This Help Guide shows how to check the version of Firmware in your FilesThruTheAir™ WiFi sensor device

Finding the Firmware installed in my WiFi Device

The firmware version comprises two parts, and is usually reported as shown:



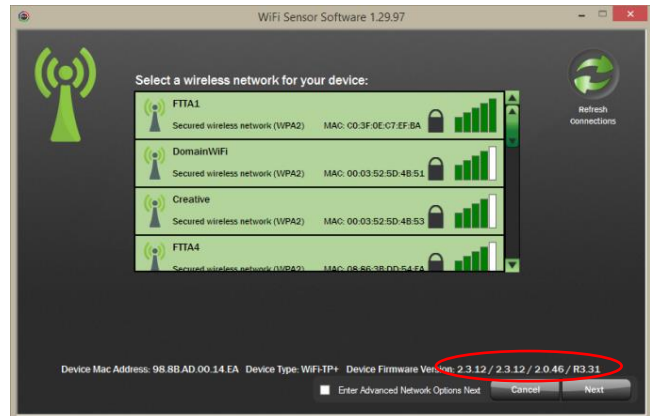
How do I find the firmware version installed in my FilesThruTheAir™ WiFi Device?

PC Software

You can check the firmware version when setting up your Sensor using the WiFi Sensor Software on your PC.

The full firmware version is displayed on the Network Selection screen.

- Run the WiFi Sensor Software.
- Connect the Sensor to the PC using the USB cable supplied.
- Click on **Set-Up Device**, and select **On This PC** or **On The Cloud**.
- The Network Selection screen will be displayed.
- You can click **Cancel** if you don't want to proceed with Set-Up.

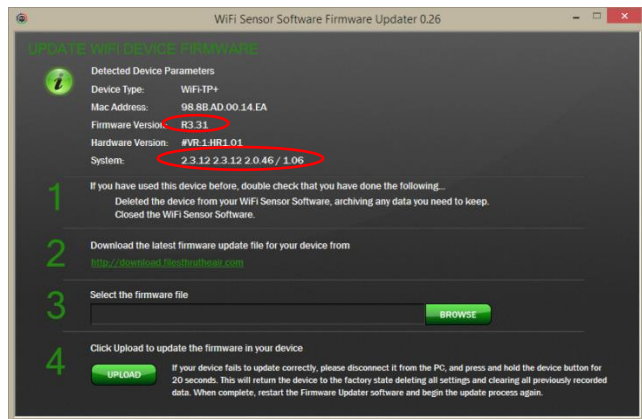




Firmware Updater Software

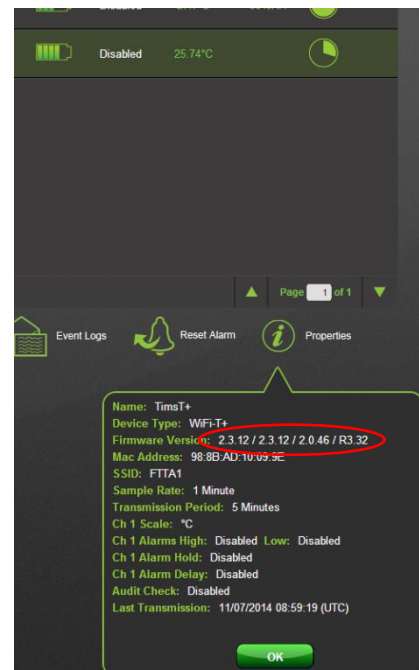
The Application and System Firmware versions are displayed in the **Device Parameters** when the device is connected.

- Run the Firmware Update Software.
- Connect the Sensor to the PC using the USB cable supplied.
- The Sensor will be detected automatically, and the **Device Parameters** displayed.



On the FilesThruTheAir™ Cloud

- Sign-In to you Cloud account.
- Select the Sensor on the **Device** page.
- Click on **Properties**.
- The full version is displayed.





On the device

- Press and hold the button for 10 seconds.
- When the button is released the Application Firmware version is briefly displayed.

