



EL-DataPad


Quick Start Guide

WELCOME

Thank you for purchasing an EL-DataPad portable viewer for use with EasyLog USB data loggers. This quick start guide provides basic information to help you set up your new product for the first time and begin using the EL-DataPad with your chosen data logger.

USING YOUR EL-DATAPAD FOR THE FIRST TIME


1. Fully Charge Your EL-DataPad

Your EL-DataPad comes with approximately 25% battery capacity so you have the opportunity to try the unit straight out of the box. HOWEVER, before extended use, fully charge the unit by connecting it to your PC using the cable provided. Your EL-DataPad will display a  when it is fully charged.

2. Turn On The EL-DataPad

To turn on, simply press the button on the front. To turn off, press and hold the button for 3 seconds. To conserve battery life, the screen will turn off after a period of inactivity. Press the button or touch the screen to wake the unit.

3. Set Time, Date and Backlight Requirement

When the unit is fully charged, detach from your PC. Press the  icon to choose screen options such as screen time out and to set time and date.

CONNECTING AN EL-USB DATA LOGGER

Insert your EL-USB Data Logger into the USB port on the top of the EL-DataPad. Once connected, you can download existing data from that unit, or set-up your logger for use.

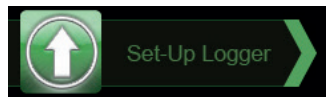


SET-UP LOGGER

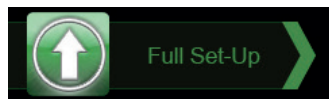
By pressing on the Set-Up Logger icon shown above, users can name their data logger, select a sample rate, set high and low alarms and choose the logging start time. Simply press the green icon and follow the on-screen instructions.

Full Set-Up guides you through every stage of the logger set-up using on-screen instructions.

If you have previously set-up the logger and just want to change the start time and date, use the Quick Set-Up.

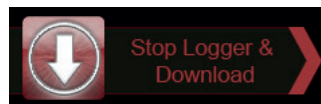


Note: If you are setting up a data logger that is already logging data follow 'Stop Logger & Download' instructions first.



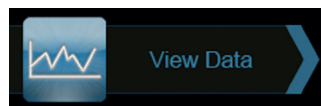
STOP LOGGER & DOWNLOAD

Connect the data logger to the EL-DataPad, press the red arrow and follow the on-screen instructions. After doing so, remember to set-up and start your logger to begin a new logging session.



VIEW DATA

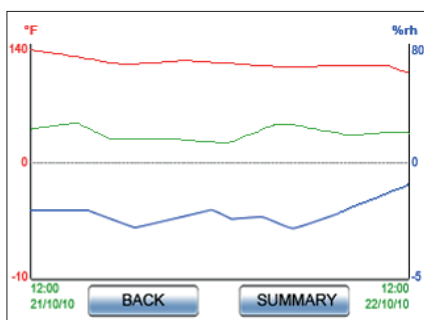
The EL-DataPad enables you to view graphical data that is stored in memory. To view data, press the blue graph icon and select the file you wish to view by following the on-screen instructions.



Press the help icon  for additional information.

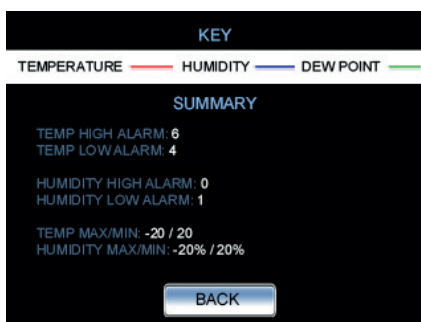
GRAPHICAL DATA IS DISPLAYED IN THE FOLLOWING FORMATS:

Trend



This graph is based on data from an ELUSB-2 logger.

Legend & Summary



TRANSFERRING DATA ONTO A PC/MAC

Connect the EL-DataPad to the PC/Mac with the cable provided. It will detect that the EL-DataPad has been connected.

Files downloaded will be located in the EL-DataPad drive in the 'Log Files' Directory. Select the files you wish to download and copy them to your PC/Mac. Once uploaded, data is saved in comma separated variable (csv) format, making it suitable for import into spreadsheet packages such as Microsoft Excel or graphed on a PC using Lascar's EL-WIN-USB software.

For a full product datasheet for your data logger or for more information on the rest of the EasyLog range visit www.lascarelectronics.com/data-loggers

RECHARGING

The cable provided with the EL-DataPad is used for data transfer and recharging. The EL-DataPad will automatically start recharging once it is connected to a PC. To use less power decrease the backlight time setting.



IMPORTANT SAFETY INFORMATION



Repairing or Modifying

Never attempt to repair or modify Lascar products. Dismantling them, other than for the purpose of changing replaceable batteries, may cause damage that is not covered under the warranty. Servicing should only be provided by an authorized supplier.



Disposal and Recycling Information

You must dispose of Lascar products in accordance with relevant laws and regulations. They contain electronic components and lithium batteries and therefore must be disposed of separately from household waste.

UK T +44 (0) 1794 884567
E sales@lascar.co.uk

USA T +1 (814) 835-0621
E us-sales@lascarelectronics.com

HK T +852 2389 6502
E sales@lascar.com.hk



EasyLog

www.lascarelectronics.com/data-loggers

Iss 3_11-2018

Disclaimer:

Every effort has been made to ensure the accuracy of this publication and no responsibility or liability can be accepted by Lascar Electronics Limited for any errors or omissions in the content of this document. Data and legislation may change, and so we strongly advise you to obtain and review the most recently issued regulations, standards, and guidelines. This publication does not form the basis of a contract.